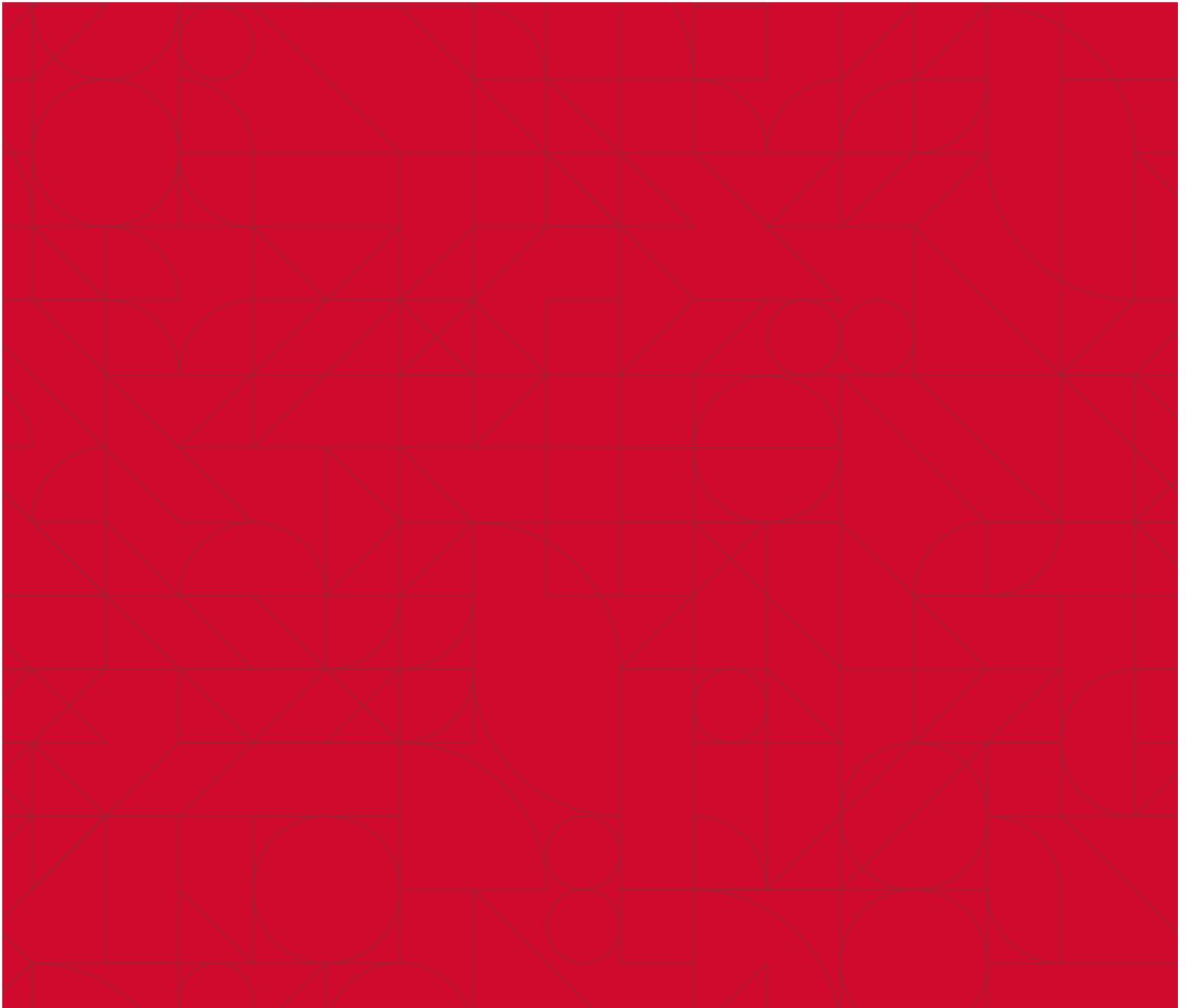


workware™

# Conceptual Application Inspiration

June 2, 2015

HAWORTH®



# Nomadic Touchdown

Ike is used to his nomadic workstyle, but he relies on technology to support it. Each day he consults his calendar, figures out what he needs to get done and the best place to accomplish his work. Workware Wireless helps nomadic workers like Ike connect quickly and spontaneously in social settings such as “third spaces.” He can stroll in, grab his latte, sit at a touchdown space and casually interact with his coworkers from any mobile device. With technology tools like Workware Wireless, Ike feels empowered and productive—no matter where he works.



# Multimedia Project Room

Nico, Magnus, and Olivia are more like family than coworkers. That's because the long - term project they're on requires them to spend hours together each day—every day—juggling a variety of media as they brainstorm and synthesize ideas. With three very different workstyles, they benefit from a variety of tools—from tactile to technology. Workware Wireless complements analog displays like tackboards and whiteboards to suit the team's need for a spectrum of presentation and collaboration choice. And, if one of them needs to work remotely, Workware Wireless enables secure sharing of information.



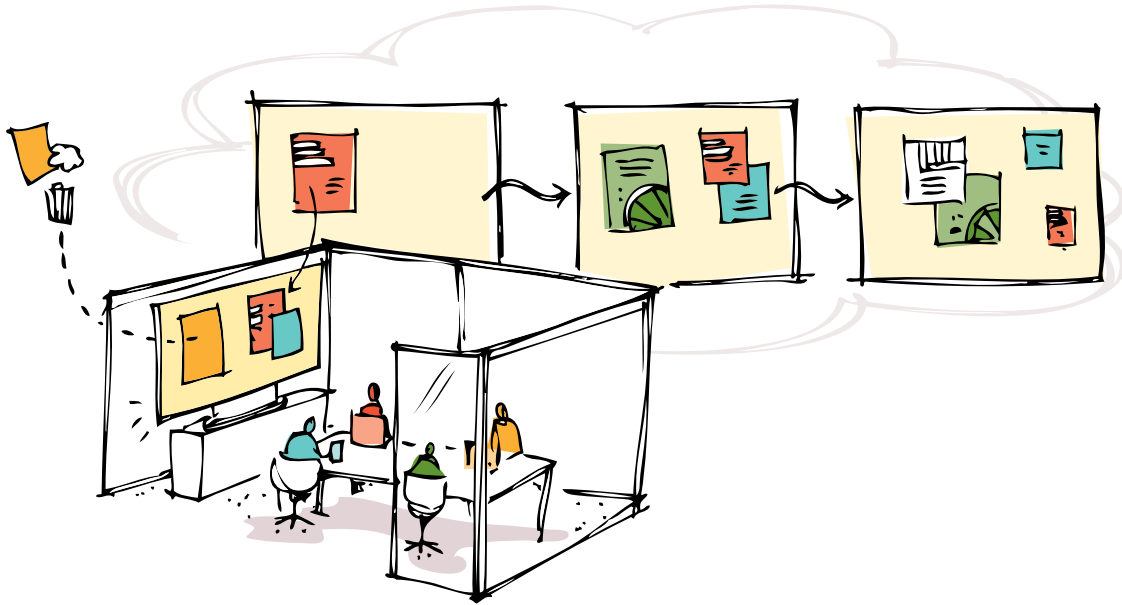
# Remote Camera Sharing

Cameras aren't just for selfies. Everyone is using them to capture daily aspects of life—and work. On-the-go teammates like Piper and Levi rely on their phone cameras for inspiration and creativity. They don't work in an office environment every day so they need a secure photo-sharing application that enables sharing in real time, virtually. Workware Wireless supports this collaborative function so Piper and Levi can fuel their creativity and stay productive.



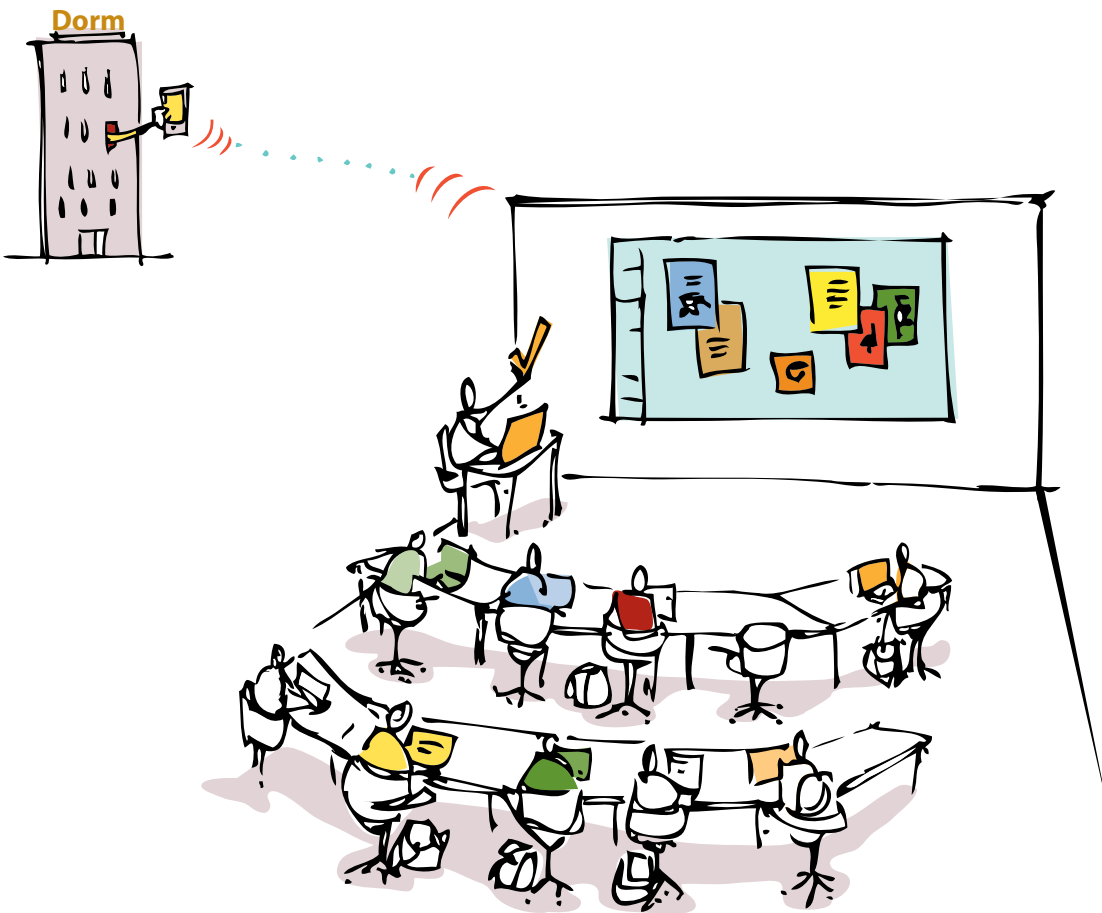
# Real Time Collaboration

Sebastian meets with clients daily and feels most productive when he and his team can make changes on the fly. Freed from the typical restrictions of other sharing platforms, Workware Wireless enables everyone involved with a project to actively participate and contribute. No longer limited to PowerPoint or PDFs—they can display a variety of media at one time. Delete a photo, post a sketch, re-order content: Sebastian's team thrives on adding, combining, or shuffling ideas in real time to find the best solution that meets their clients' needs.



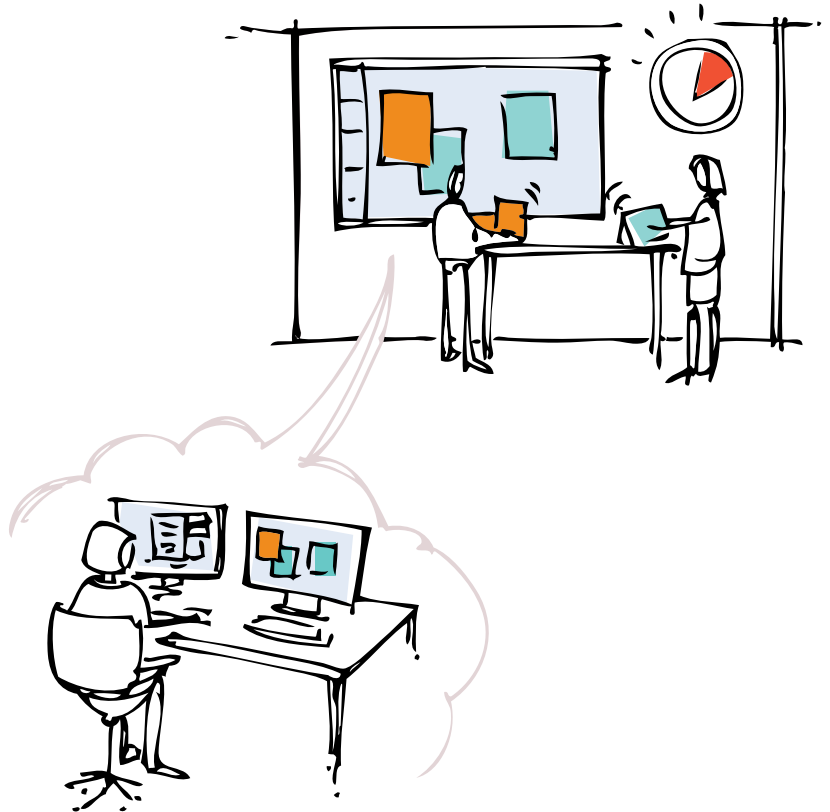
# 21st Century Learning

Educational institutions designing for 21st century learning as they plan future classroom spaces. Lionel is a designer who understands this approach must address a variety of personalities and learning styles, both introverts and extroverts. Workware Wireless helps bring democracy to any learning environment by engaging each participant through a unique user representation, called a Mycon™. These graphic symbols are assigned to individuals by color to associate shared content with each person. Everyone contributes in the way that makes them feel comfortable and energized. Students who can't interact in person can participate from their dorm room.



# Real Time Problem Solving

Let's say Fabienne needs to meet an aggressive deadline. Her key team members work out of the corporate office but she is in her home office for the day. Collaboration is key to make the deadline. Workware Wireless enables Fabienne to review multimedia content with her team—making comments and revisions in real time. Dual--screen monitors let her continue to work independently on one screen while keeping in touch with her team's progress on the other.



# Virtual Collaboration

Global teamwork is the norm for organizations everywhere, and in every industry. Workware Wireless lets people collaborate and work towards a common goal, no matter where they're located.

